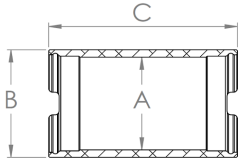
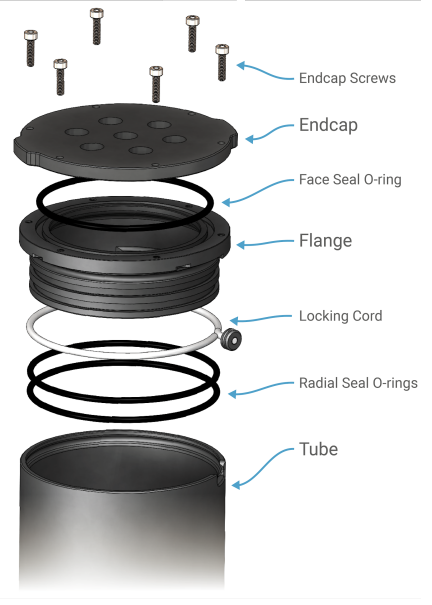
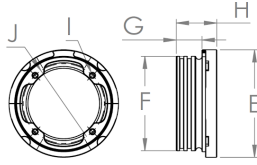


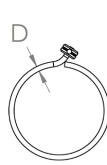
Series Diameter [mm]	Tube Material / Finish	(A) Tube ID [mm]	(B) Tube OD [mm]	(C) Overall Length* [mm]	Weight [g]	Depth Rating* [m]	Part Number	
								Tubes
 50 (2")	6061-T6 Aluminum, Type II Anodized	Ø50.0 ± 0.5	Ø58.0 ± 0.2	100	169	950	BR-100534-100	
				150	261		BR-100534-150	
				300	536		BR-100534-300	
	Cast Acrylic	Ø49.5 ± 1.5	Ø58.0 ± 1.0	100	75	400	BR-100230-101	
				150	115	200	BR-100230-151	
				300	238	150	BR-100230-301	
 75 (3")	6061-T6 Aluminum, Type II Anodized	Ø80.14 ± 0.20	Ø86.5 ± 0.3	150	328	950	BR-100611-150	
				240	530		BR-100611-240	
				300	665		BR-100611-300	
				400	890		BR-100611-400	
	Cast Acrylic	Ø76.2 ± 2.0	Ø88.9 ± 0.7	150	264	300	BR-101066	
				240	442	200	BR-100352	
				300	560	150	BR-100895	
				400	758	125	BR-100293	
				200	707	950	BR-100195-200	
 100 (4")	6061-T6 Aluminum, Type II Anodized	Ø104.16 ± 0.20	Ø112.0 ± 0.3	200	1066	950	BR-100195-200	
				300	1066		950	BR-100195-300
				400	1426		BR-100195-400	
	Cast Acrylic	Ø101.6 ± 2.1	Ø114.3 ± 0.8	200	488	150	BR-101052-200	
				300	746	100	BR-101052-300	
				400	1004	70	BR-101052-400	



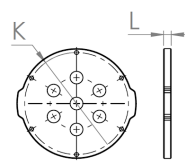
TUBE



FLANGE



LOCKING CORD



END CAP

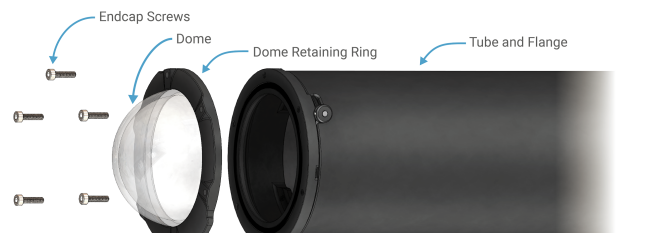


DOME

Series Diameter [mm]	Face Seal O-ring	Radial Seal O-ring	(D) Locking Cord Diameter [mm]	(E) Flange OD [mm]	(F) Piston Diameter [mm]	(G) Piston Length [mm]	(H) Overall Length [mm]	(I) Inner Mounting Holes	(J) Inner Mounting Hole Circle	Weight [g]	Part Number
 50 (2")	-030 Buna-N 70A	-030 Buna-N 70A	2.6 ± 0.4	Ø58.0 ± 0.1	Ø50.95 ± 0.05	15.5 ± 0.1	21.5 ± 0.1	4x M3x0.5	Ø43.0 ± 0.1	61	BR-100276-999
										58	BR-100276-002
										63	BR-100276-004
										41	BR-100628-998
 75 (3")	-148 Buna-N 70A	-150 Buna-N 70A	2.6 ± 0.4	Ø88.9 ± 0.1	Ø79.95 ± 0.05	19.1 ± 0.1	27.0 ± 0.1	4x M3x0.5	Ø68.6 ± 0.1	81	BR-100647
 100 (4")	-154 Buna-N 70A	-154 Buna-N 70A								Ø114.3 ± 0.1	Ø103.95 ± 0.05

Series Diameter [mm]	Material	End Cap Screws (SS316 Socket Head Cap Screws)	(K) Endcap Screw Hole Circle	Hole Configuration	(L) Thickness [mm]	Weight [g]	Depth Rating* [m]	Part Number
 50 (2")	Cast Acrylic	6x M2x0.4-10	Ø50.8 ± 0.1	Blank (No holes)	6.4 ± 0.1	17	600	BR-100094
				Blank (No holes)	-	63	950	BR-100276-999
				2x M10 Thru	-	59	950	BR-100276-002
				4x M10x1.5 Threaded	-	58	950	BR-100276-004
 75 (3")	Cast Acrylic	6x M3x0.5-12	Ø82.6 ± 0.1	Blank (No holes)	9 ± 0.1	58	400	BR-100630
				Blank (No holes)	6 ± 0.1	102	950	BR-100949-999
				4x M10 Thru	6 ± 0.1	97	950	BR-100949-004
				7x M10 Thru	6 ± 0.1	93	950	BR-100949-007
 100 (4")	Cast Acrylic	6x M3x0.5-16	Ø108.0 ± 0.1	Blank (No holes)	12.7 ± 0.1	135	500	BR-100061
				Blank (No holes)	10 ± 0.1	234	950	BR-100184
	6061-T6 Aluminum, Type II Anodized	6x M3x0.5-16	Ø108.0 ± 0.1	5x M10 Thru	6 ± 0.1	162	500	WTE4-M-END-CAP-5-HOLE (End of life, new rev below)
				10 ± 0.1	223	950	WTE4-M-END-CAP-5XM10 (Coming soon! 950m rating)	
				10x M10 Thru	10 ± 0.1	212	950	BR-100170
				7x M10 Thru	10 ± 0.1	197	950	BR-101113
				11x M10x1.5 Threaded	10 ± 0.1	215	950	BR-100138
				1x M10 Thru, 4x M14 Thru	10 ± 0.1	195	950	BR-100066
2x M10 Thru, 8x M14 Thru	10 ± 0.1	195	950	BR-100066				
5x M10 Thru, 2x M10x1.5 Threaded	10 ± 0.1	188	950	BR-100151				
8x M14x1.5 Threaded	10 ± 0.1	188	950	BR-100151				

Series Diameter [mm]	Material	(M) Dome Internal Radius [mm]	(N) Dome Wall Thickness [mm]	Weight [g]	Depth Rating* [m]	Part Number
 50 (2")	Acrylic Dome, Polycarbonate Retaining Ring	18.0 ± 0.1	2.50 ± 0.10	15	950	BR-100859
 75 (3")		31.25 ± 0.10	3.1 ± 0.1	39	750	BR-101059
 100 (4")		43.5 ± 0.1	3.75 ± 0.10	81	500	BR-100495



\* Overall tube length tolerance ± 0.5 mm

\* The depth ratings for cast acrylic components are applicable only for short-term submersions lasting less than two weeks. For longer submersion, we suggest using aluminum components only.