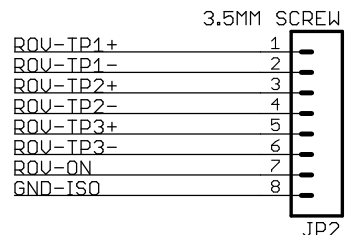




BlueRobotics

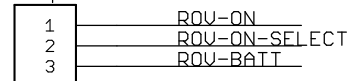


ROV Tether Terminal



Override ROV-on

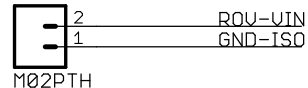
Jumper



Solder jumper to override tether power-on signal. Connect to ROV-BATT to turn on as soon as batteries are plugged in.

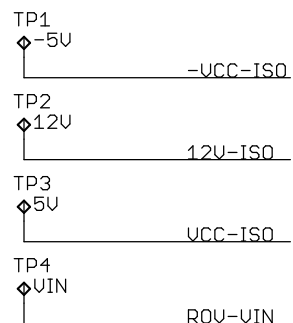
Switched Power Access

JP5

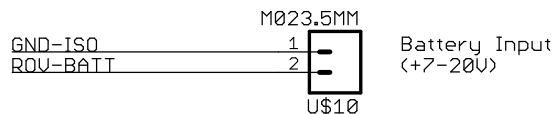


Switched Battery Power (May someday be used to switch on separate power board)

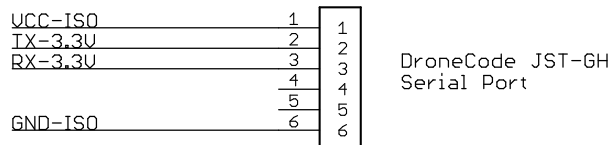
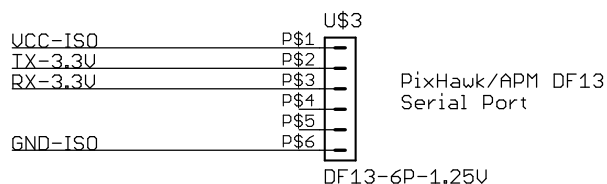
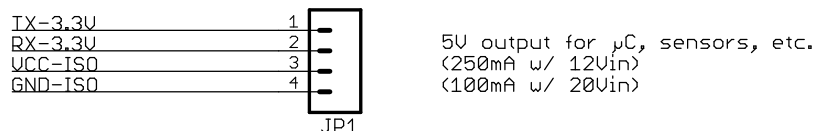
Test Points



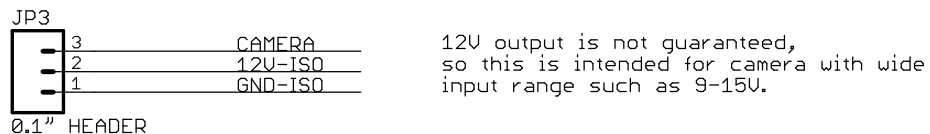
Power Terminal



Serial Port (0.1" Header, DF13, JST-GH)



Camera Connections

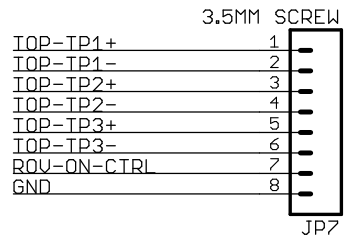


Fathom-S
Onboard Connectors & Misc.

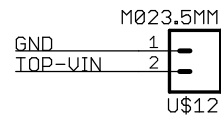
Date: 5/15/16 6:41 PM

Sheet: 1/8

Topside Tether Terminal



Alternate TOP-VIN



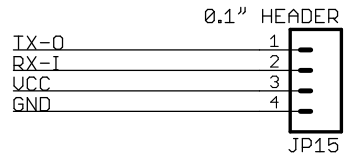
Alternate topside power input
(if not using USB)
(+7-20V)



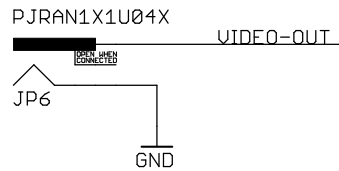
BlueRobotics



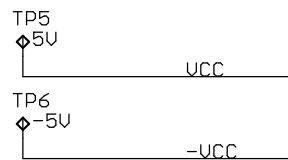
Serial TTL

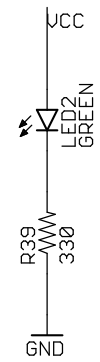
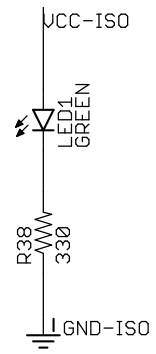


Video Out



Test Points





Indicator LEDs

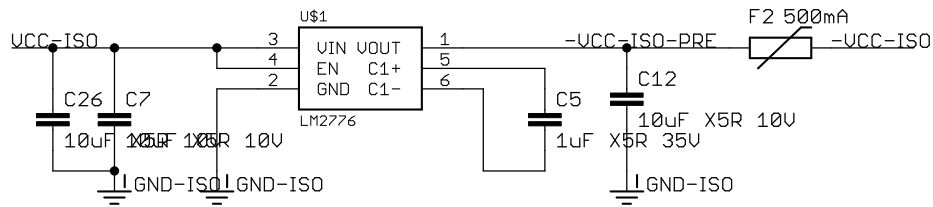


Fathom-S
Indicator LEDs

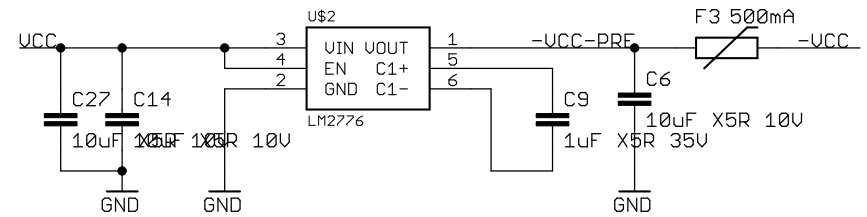
Date: 5/15/16 6:41 PM

Sheet: 3/8

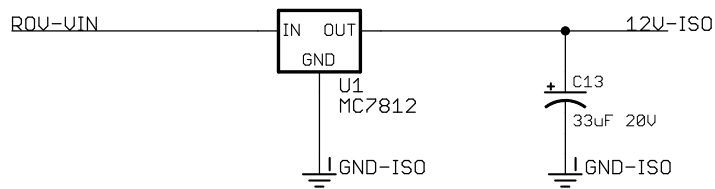
Supply Inverter for Op-Amp (ROV)



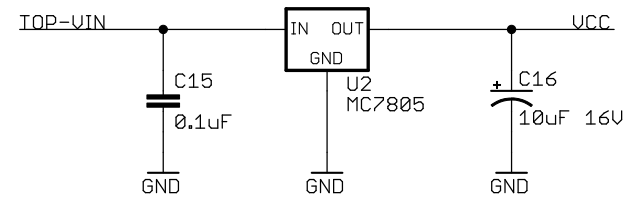
Supply Inverter for Op-Amp (Topside)



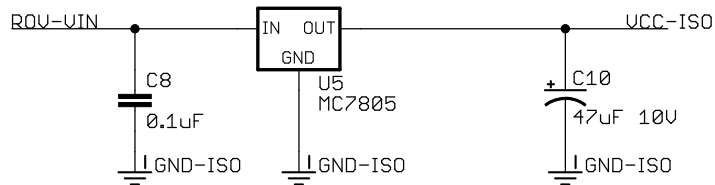
Power Supply, VIN to 12V (ROV Camera)



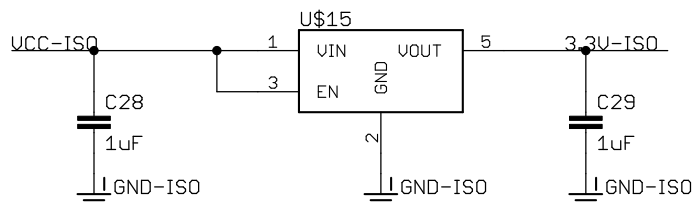
Power Supply, VIN to 5V UCC (Topside)



Power Supply, VIN to 5V (ROV)



Power Supply, VIN to 3.3V (ROV)

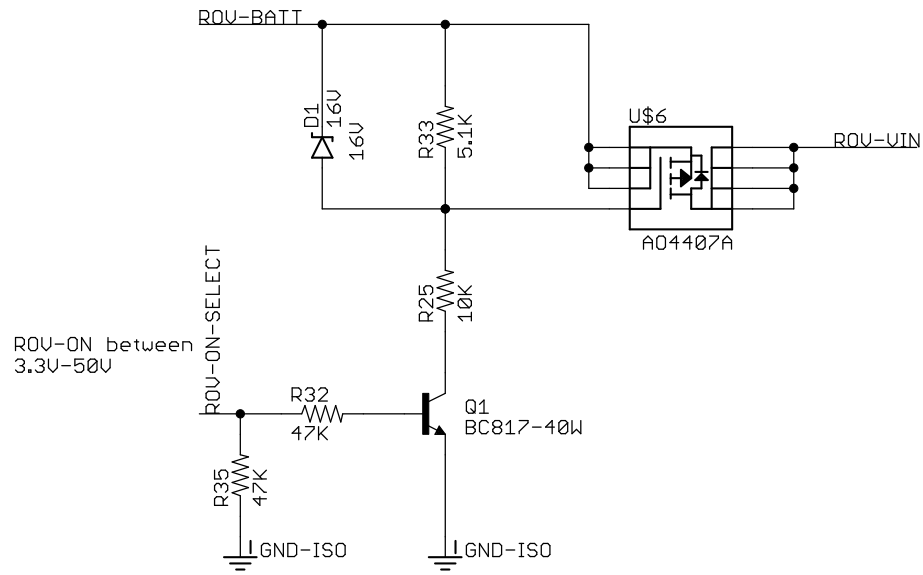


Fathom-S
Power

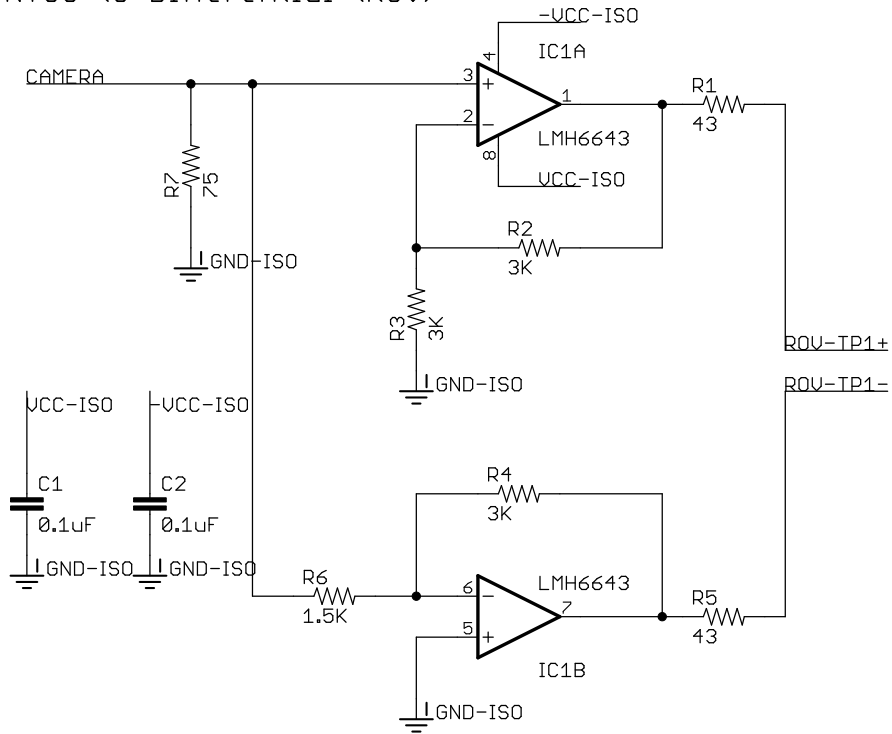
Date: 5/15/16 6:41 PM

Sheet: 4/8

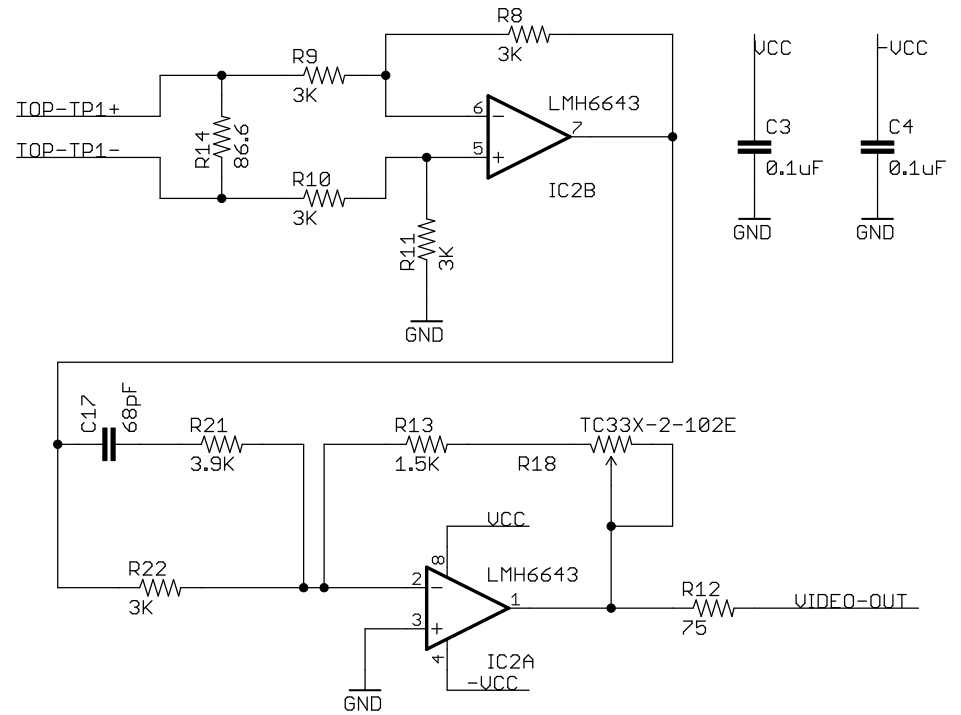
Power-on Switch



NTSC to Differential (ROV)



Differential to NTSC (Topside)

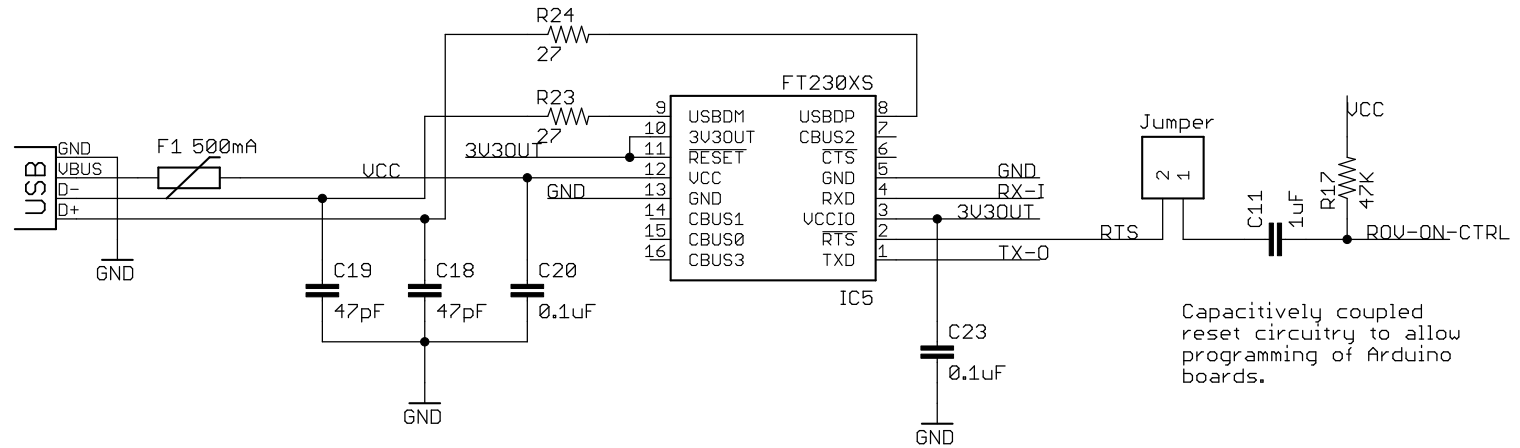


Fathom-S
Video Amplifiers

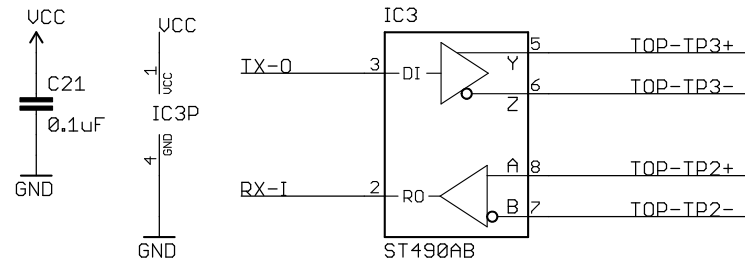
Date: 5/15/16 6:41 PM

Sheet: 6/8

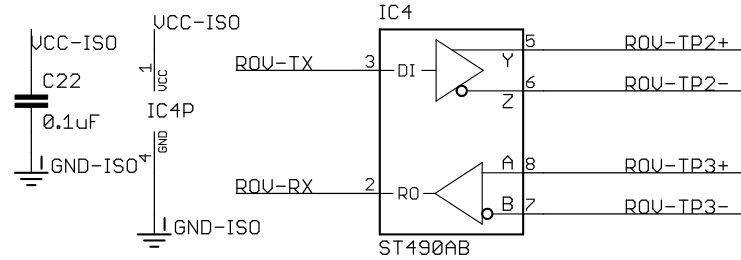
USB to TTL Serial (Topside)



TTL Serial to RS422 (Topside)



TTL Serial to RS422 (ROV)



5V-3.3V Level Shifting

